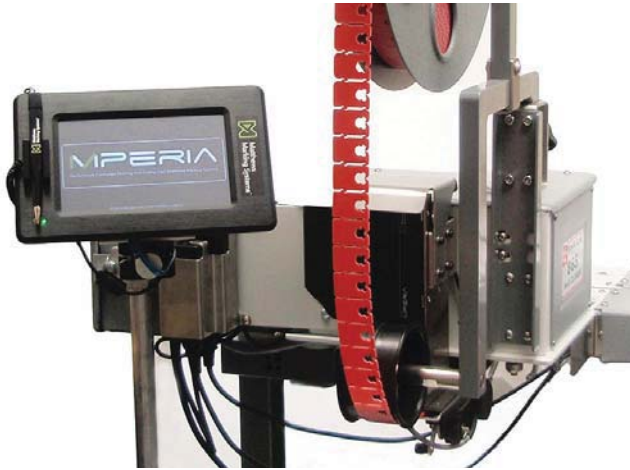




# TYPE 904C VIAjet™ 865 TIJ PRINTER



The Kwik Lok® 904C VIAjet™ 865 is designed to be attached to the Kwik Lok® 865 Automatic Bag Closing Machine. The printer utilizes the *VIAjet™ L12 Series* built by *Matthews Marking Systems™* and is a programmable thermal ink jet printer. Not available for 865AS (stainless) machine.

The 904CF Printer can be field installed on 865A Closers. The 904CF includes an 865 Lok Track Kit (consists of spacer, guide and shim.)

### ELECTRICAL SPECIFICATION

96-264VAC, 50/60 Hz,  
0.5-1A, 1 Ph

### APPROXIMATE SHIPPING WEIGHT AND DIMENSIONS

22.5" x 20.5" x 17.5"; 27 lb.; 4.7 cu. ft.  
57.2 cm x 52.1 cm x 44.5 cm; 12.3 kg; 0.13 m<sup>3</sup>

### ORDERING INFORMATION

Refer to the specification chart below for model information and available options. Refer to the following page for closure and closure-label print area specifications and determine the following:

- A. TYPE:
  1. 904C mounted to the 865A Closer.
  2. 904CF for field mounting to 865A Closer.
- B. MODEL:
  1. Select Model A for adapter kit (for fitting to the 865 closer) with VIAjet™ printer. Then Select touchscreen controller model number:
    - 0 - For no controller supplied (printhead operated by a Model 2 system).
    - 1 - Includes 7" touchscreen controller that operates one printhead (standard).
    - 2 - Includes 12" touchscreen controller that operates multiple printheads and VIAcode Creator™ is installed.
  2. Select Model B for adapter kit without VIAjet™ printer (for customers that have existing VIAjet™ printer).
  3. Select flow direction. (R = right hand, and L = left hand). Must match hand of closer the printer will be mounted on.
- C. SPECIFY CLOSURE:
 

The closure must match that of the 865A Closer on which the printer is to be mounted.
- D. SPECIFY VOLTAGE REQUIREMENT AND COUNTRY OF OPERATION.
- E: IN-FIELD (904CF) INSTALLATION REQUIREMENTS:
  - Z8065184 Kit-Mast- Optional when replacing 894C & 901C. (Places Lok Guide Roller closer to track infeed.)
  - Z8065172 Kit-Mast-Turret- Optional when replacing 894C & 901C.(Places Lok Guide Roller closer to track infeed.)
  - Z8094007 Kit-Mast-Low Profile-Turret- Required if replacing 894C & 901C Low Profile Mast.
  - Z8094008 Kit-Mast-Low Profile- Required if replacing 894C & 901C Low Profile Mast.

Example order: Type 904C, Model AR, printing on Series K-NRP, 115VAC, North America.

### PRINTING SUPPLIES

Order from your distributor.

### SPECIFICATION CHART

TYPE	MODEL DESIGNATION			CLOSURES	CLOSURE-LABELS	SPEED
	MODEL	CONTOLLER	FLOW DIRECTION			
904C	A	0, 1 or 2	R or L	J-NRP, K-NRP, JM-NRP, KM-NRP, KM57-NRP	CFJ, PF, PFM, TF, TFM, P-200, PM-200, T-220, TM-220 (Medium duty or Heavy duty plastic)	Up to 80 Packages per minute
	B	-				
904CF*	A	0, 1 or 2				
	B	-				

\*Field Mounting





# TYPE 904C VIAjet™ 865 TIJ PRINTER

## PRINT AREA SPECIFICATIONS

The printable areas defined here represent the maximum allowable print areas for each style of closure and closure-label. All closure-labels shown on this page are RIGHT HAND. Not all closures available for the 865A Closer can be used with the 904C.

